

INTRODUCING

Bridge of Hope

THE NEWEST RELEASE BY THOMAS KINKADE

Title: Bridge of Hope

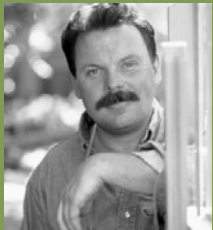
Image Sizes: 18" x 24"

25.5" x 34"

30" x 40"

40" x 60"

Publish Date: May 2003



My Bridges of Inspiration series celebrates what I like to think of as God's divine plan for provision. Each of us, in our daily life, reach obstacles and chasms that can only be bridged by God's miraculous love. In an earlier series, I created a painting entitled **BRIDGE OF FAITH**. The popularity of this work inspired me to speculate further on the nature of bridges. A bridge is symbolic to me as an artist, since it suggests a transition point from one area of life to another. Bridges provide safe transport over impassable conditions, and are changeless in the midst of the changing seasons.

In the Bridges of Inspiration series, I envision creating paintings that allegorically address such complex issues of human experience as hope, love and personal peace. In the first painting of the series, I strove to portray an image of solidity in the context of the delicacy of nature. The **BRIDGE OF HOPE** is as stable as the massive granite flagstones that form its arch and will stand for as long as the quicksilver brook rolls down from the hills beneath it. Topped by antique alabaster cornices and graced by lavish vining flowers, the stone structure reminds us that hope is at once as solid as rock and as subtle as the fragrance of blossoms on the breeze.

A magnificent white dogwood, symbol of the purity of God's grace, shades the bridge. Its over-arching boughs remind us that, while we stand on the **BRIDGE OF HOPE**, we are enshrouded by the loving embrace of our creator.

THOMAS KINKADEE
Painter of Light™

A handwritten signature of Thomas Kinkadee in black ink. The signature is written in a cursive, flowing style, with the first letters of the first and last names being capitalized and prominent.

THOMAS KINKADE

Painter of Light™

KEY POINTS

1. Bridge of Hope is the first painting of an exciting new series called Bridges of Inspiration.
2. The theme of bridges is universal to all of us as the idea of a way to traverse difficulties in your life, or as a transition point from one area of life to another. Bridges provide safe transport over impassable conditions, and are changeless in the midst of the changing seasons.
3. The theme of hope is carried forward through the use of the dogwood tree. The white dogwood is a symbolic tree, because it is the first tree to bloom in the spring, and here it emphasizes the purity of God's grace as it shades the bridge.
4. In the first painting of the series, Thom strove to portray an image of solidity in the context of the delicacy of nature. The **BRIDGE OF HOPE** is as stable as the massive granite flagstones that form its arch and will stand for as long as the quicksilver brook rolls down from the hills beneath it.
5. Thom loves to paint reflected light, and we can see that on the surface of the water. The tree and the touches of light on the bridge glow very brightly when the painting is viewed in a dimmed room light.
6. Inspired by the the times in which we live, Thom wanted to convey a strong sense of journey in the **BRIDGE OF HOPE**, where we are crossing over a time of need. The journey then continues as we see the pathway heading off into the distance. There is a sense of mystery, because we don't really know where the path is leading.

RETAIL ISSUE PRICING

	S/N standard numbered			A/P artist proof			G/P gallery proof			P/P publisher's proof			I/P international proof			R/E renaissance edition			S/P studio proof				
	Retail Price	Item Number	Edition Size	Retail Price	Item Number	Edition Size	Retail Price	Item Number	Edition Size	Retail Price	Item Number	Edition Size	Retail Price	Item Number	Edition Size	Retail Price	Item Number	Edition Size	Retail Price	Item Number	Edition Size		
18" x 24"																							
Canvas Unframed	780	38237	-	940	38238	-	940	38240	-	990	38239	-	1100	38241	-	2540	38243	-	4510	38242	-		
Canvas Framed	980	38244	-	1140	38245	-	1140	38247	-	1190	38246	-	1510	38248	-	2950	38249	-	4920	38250	-		
25.5" x 34"																							
Canvas Unframed	1240	38260	-	1400	38261	-	1400	38264	-	1450	38262	-	1550	38265	-	4140	38266	-	7280	38267	-		
Canvas Framed	1560	38252	-	1720	38253	-	1720	38256	-	1770	38254	-	2100	38257	-	4690	38258	-	7830	38259	-		
Paper Unframed	295	38269	-	345	38270	-	345	38272	-	370	38271	-	595	38273	-	n/a	n/a	n/a	n/a	n/a	n/a		
Paper Framed	800	38274	-	820	38275	-	840	38277	-	860	38276	-	840	38278	-	n/a	n/a	n/a	n/a	n/a	n/a		
30" x 40"																							
Canvas Unframed	1710	38279	-	1870	38280	-	1870	38282	-	1920	38281	-	2030	38283	-	5880	38284	-	10240	38285	-		
Canvas Framed	2160	38286	-	2320	38287	-	2320	38289	-	2370	38288	-	2660	38290	-	6510	38291	-	10870	38292	-		
40" x 60"																							
Canvas Framed	7995	38251	-																				

Prices are correct as of issue date and are subject to change. For complete information on edition sizes, please see the Certificate of Authenticity.



www.thomaskinkadee.com

Media Arts Group, Inc. • 900 Lightpost Way • Morgan Hill, CA • 95037 • 1-800-366-3733

Media Arts Group, Inc. is a publicly traded company listed on the NYSE (MDA).

© 2003 Thomas Kinkadee, Media Arts Group, Inc., Morgan Hill, CA

IRC # 38344 / Folder #38343 / Postcard # 38345