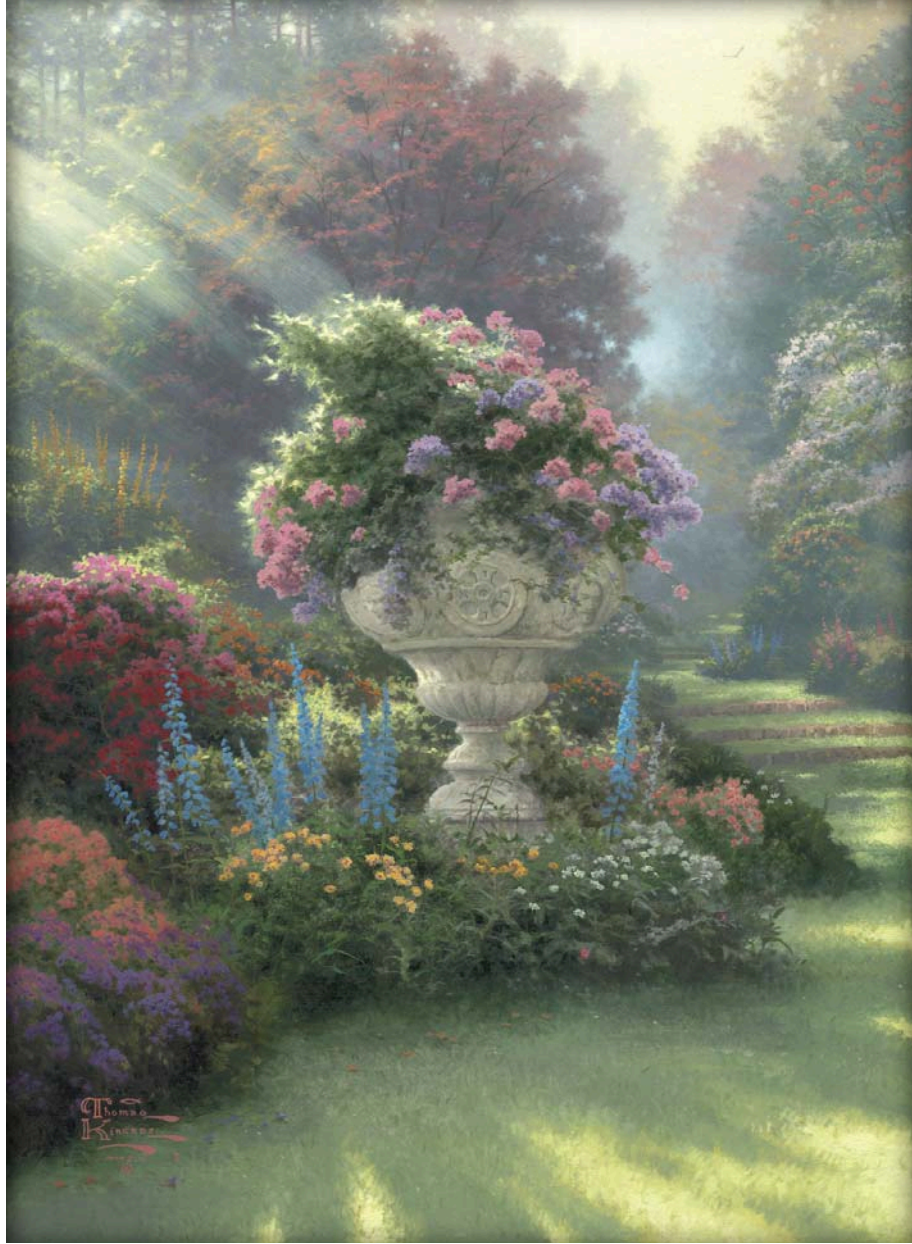




In **The Garden of Hope** I celebrate the bountiful blessing that is a hopeful spirit. Central is an ancient stone urn, bearing the visages of Jesus and Mary, and holding a magnificent burst of flowers.

*Thomas Kinkadee*



© 2005 Thomas Kinkadee, The Thomas Kinkadee Company, Morgan Hill, CA

**TITLE**

The Garden of Hope/  
Gardens of Light II

**IMAGE SIZES**

16x12 / 24x18 / 34x25.5

**PUBLISH DATE**

January, 2005

## THE GARDEN OF HOPE / Gardens of Light II

Hope is the great gift of a loving God. For people of faith, hope is symbolized in the dawning of each day, the assurance that God’s love is new every morning. Hope lights our spirit in the midst of despair; it is the life force that “through the green stem drives the flower;” it keeps a divine vision alive in the hearts of the weak and needy.

In **The Garden of Hope**, second in my Gardens of Light collection, I celebrate the bountiful blessing that is a hopeful spirit. Radiance bathes a garden in the woods, pouring down in a flood of light upon an ancient stone urn that is, in its carvings, a vessel of hope.

The deeply mysterious relationship between hope and sacrifice is expressed in the symbolism of the urn. Central is the Roman cross, bearing the inscription INRI - Latin for Jesus of Nazareth, King of the Jews - which was carved above the original cross by Pilate.

On the left arm of the cross is the serene visage of Mary, mother of God. And on the right, Jesus himself, in his gentle countenance, confers his blessing on the garden and its visitors. A magnificent spray of flowers burst forth from the urn in a splendid celebration of the good news. Surely, **The Garden of Hope** is a garden lavish with new beginnings.





## Key Points

1. **THE GARDEN OF HOPE** is the first image to be released in 2005, and is second in the series *Gardens of Light*.
2. In the center of the painting, the stately urn features the visage of Christ, as well as a Roman cross and opposite, the Virgin Mary.
3. The garden depicted in this lovely painting symbolizes the beauty and blessing of hope, growing and flourishing in the light of God.
4. There are five N's hidden in **THE GARDEN OF HOPE**, Thom's continued loving tribute to his wife Nanette.

## Retail Issue Pricing

	<b>S/N</b> Standard Numbered	<b>A/P</b> Artist Proof	<b>G/P</b> Gallery Proof	<b>P/P</b> Publisher's Proof	<b>I/P</b> International Proof	<b>R/E</b> Renaissance Proof	<b>S/P</b> Studio Proof
<b>16"x12"</b>							
Canvas Framed	\$660	\$820	\$820	\$870	\$1110	\$1990	\$3320
Canvas Unframed	\$510	\$670	\$670	\$720	\$830	\$1710	\$3040
Paper Unframed	*	*	*	*	*	—	—
<b>24"x18"</b>							
Canvas Framed	\$980	\$1140	\$1140	\$1190	\$1510	\$2940	\$4920
Canvas Unframed	\$780	\$940	\$940	\$990	\$1100	\$2530	\$4510
Paper Unframed	\$230	\$280	\$280	\$305	\$530	—	—
<b>34"x25.5"</b>							
Canvas Framed	\$1560	\$1720	\$1720	\$1770	\$2100	\$4690	\$7830
Canvas Unframed	\$1240	\$1400	\$1400	\$1450	\$1550	\$4140	\$7280
Paper Unframed	*	*	*	*	*	—	—
<b>Item Numbers</b>	Canvas Framed - 43100    Canvas Unframed - 43101    Paper Unframed - 43102						

\*Not being released at this time.

Prices are correct as of issue date and are subject to change. For complete information on edition sizes, please see the Certificate of Authenticity.



[www.thomaskinkade.com](http://www.thomaskinkade.com)

900 LIGHTPOST WAY MORGAN HILL, CA 95037