



Step into the world of Abraham and Isaac, Ancient Rome, Jerusalem and Jesus.

*Thomas Kinkadee*



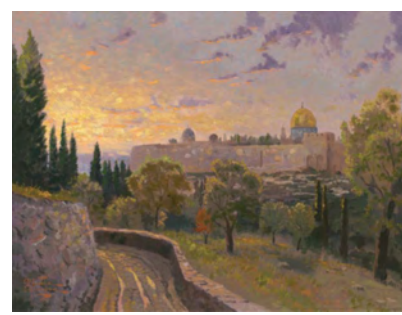
### CAESAREA

**Caesarea** shows all that remains of the important Roman port from which the new religion spread.



### GARDEN OF GETHSEMANE

I wanted my **Garden of Gethsemane** to suggest the brooding yet tranquil setting where Jesus passed the night before His crucifixion.



### JERUSALEM SUNSET

**Jerusalem Sunset** was the first painting I created in the Holy Land — this is appropriate since the timeless walls of Jerusalem are a symbol of faith to countless people.

**SERIES TITLE**  
Impressions of Israel

**IMAGE SIZE**  
18 x 24 / 24 x 18

**PUBLISH DATE**  
September 2006



### THE GARDEN TOMB

**The Garden Tomb** represents for many the place where Jesus' body was taken. It is certainly a most tranquil and spiritual spot.



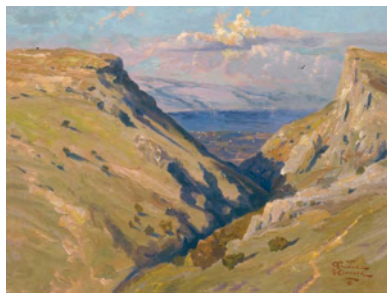
### SUNRISE, SEA OF GALILEE

The sun rises over the inland sea that was the center of Jesus' ministry in **Sunrise, Sea of Galilee**.



### VIA DOLOROSA

It is believed by many that Our Lord suffered His final agony as He carried His cross over the ancient stones of the **Via Dolorosa**.



### MOUNT ARBEL

**Mount Arbel** towers over the Sea of Galilee. Nearly a half-dozen of the small towns that figure prominently in the New Testament are visible from these heights.



### TOWER OF DAVID

This dramatic view, lit by the intense afternoon light, is regarded by many as a symbol of the ancient City of Jerusalem.



### THE WAILING WALL, JERUSALEM

Pilgrims gather to weep and pray at **The Wailing Wall, Jerusalem**, Judaism's holiest site.

  
 THOMAS KINKADEE™  
*Impressions of Israel*  
 COLLECTION  
*Painter of Light.*

  
 THOMAS KINKADE.  
*Impressions of Israel*  
 COLLECTION  
*Painter of Light.*

In early 2006, Thomas Kinkade visited the Holy Land where he spent much of his time painting in order to capture the emotion and vibrancy of this ancient land. Share these experiences through Thom's magnificent collection of images called *Impressions of Israel*.

Thomas Kinkade is honored to be the commemorative artist for the spectacular touring exhibit: **From Abraham to Jesus**, September 2006 through December 2008.

**Retail Issue Pricing**

	<b>S/N</b> Standard Numbered	<b>A/P</b> Artist Proof	<b>G/P</b> Gallery Proof	<b>P/P</b> Publisher Proof	<b>I/P</b> International Proof	<b>R/E</b> Renaissance Edition	<b>S/P</b> Studio Proof
<b>18"x24" and 24"x18"</b>							
Canvas Framed	<b>\$730</b>	<b>\$890</b>	<b>\$890</b>	<b>\$940</b>	<b>\$1,335</b>	<b>\$2,370</b>	<b>\$3,410</b>
Canvas Unframed	<b>\$560</b>	<b>\$720</b>	<b>\$720</b>	<b>\$770</b>	<b>\$925</b>	<b>\$1,960</b>	<b>\$3,000</b>
Paper Unframed	*	*	*	*	*	—	—
<b>Titles / Item Numbers</b>							
<i>Caesarea</i>	Canvas Unframed - <b>46174</b>	Canvas Framed - <b>46173</b>	Canvas Framed (E/P) - <b>46139</b>	Paper Unframed - *			
<i>Garden of Gethsemane</i>	Canvas Unframed - <b>46170</b>	Canvas Framed - <b>46169</b>	Canvas Framed (E/P) - <b>46142</b>	Paper Unframed - *			
<i>The Garden Tomb</i>	Canvas Unframed - <b>46180</b>	Canvas Framed - <b>46179</b>	Canvas Framed (E/P) - <b>46133</b>	Paper Unframed - *			
<i>Jerusalem Sunset</i>	Canvas Unframed - <b>46168</b>	Canvas Framed - <b>46167</b>	Canvas Framed (E/P) - <b>46151</b>	Paper Unframed - *			
<i>Mount Arbel</i>	Canvas Unframed - <b>46164</b>	Canvas Framed - <b>46163</b>	Canvas Framed (E/P) - <b>46154</b>	Paper Unframed - *			
<i>Sunrise, Sea of Galilee</i>	Canvas Unframed - <b>46178</b>	Canvas Framed - <b>46177</b>	Canvas Framed (E/P) - <b>46136</b>	Paper Unframed - *			
<i>The Wailing Wall, Jerusalem</i>	Canvas Unframed - <b>46176</b>	Canvas Framed - <b>46175</b>	Canvas Framed (E/P) - <b>46145</b>	Paper Unframed - *			
<i>Tower of David</i>	Canvas Unframed - <b>46172</b>	Canvas Framed - <b>46171</b>	Canvas Framed (E/P) - <b>46148</b>	Paper Unframed - *			
<i>Via Dolorosa</i>	Canvas Unframed - <b>46166</b>	Canvas Framed - <b>46165</b>	Canvas Framed (E/P) - <b>46129</b>	Paper Unframed - *			

**Each image is available as a framed Examination Proof (E/P) for \$940. Please ask your Art Consultant for details.**  
**A Master Edition is available for each image. For more information, contact your local Thomas Kinkade Signature or Corporate Gallery.**

\* Not being released at this time.

Prices are correct as of issue date and are subject to change. For complete information on edition sizes, please see the Certificate of Authenticity.



**www.thomaskinkade.com**

900 LIGHTPOST WAY MORGAN HILL, CA 95037